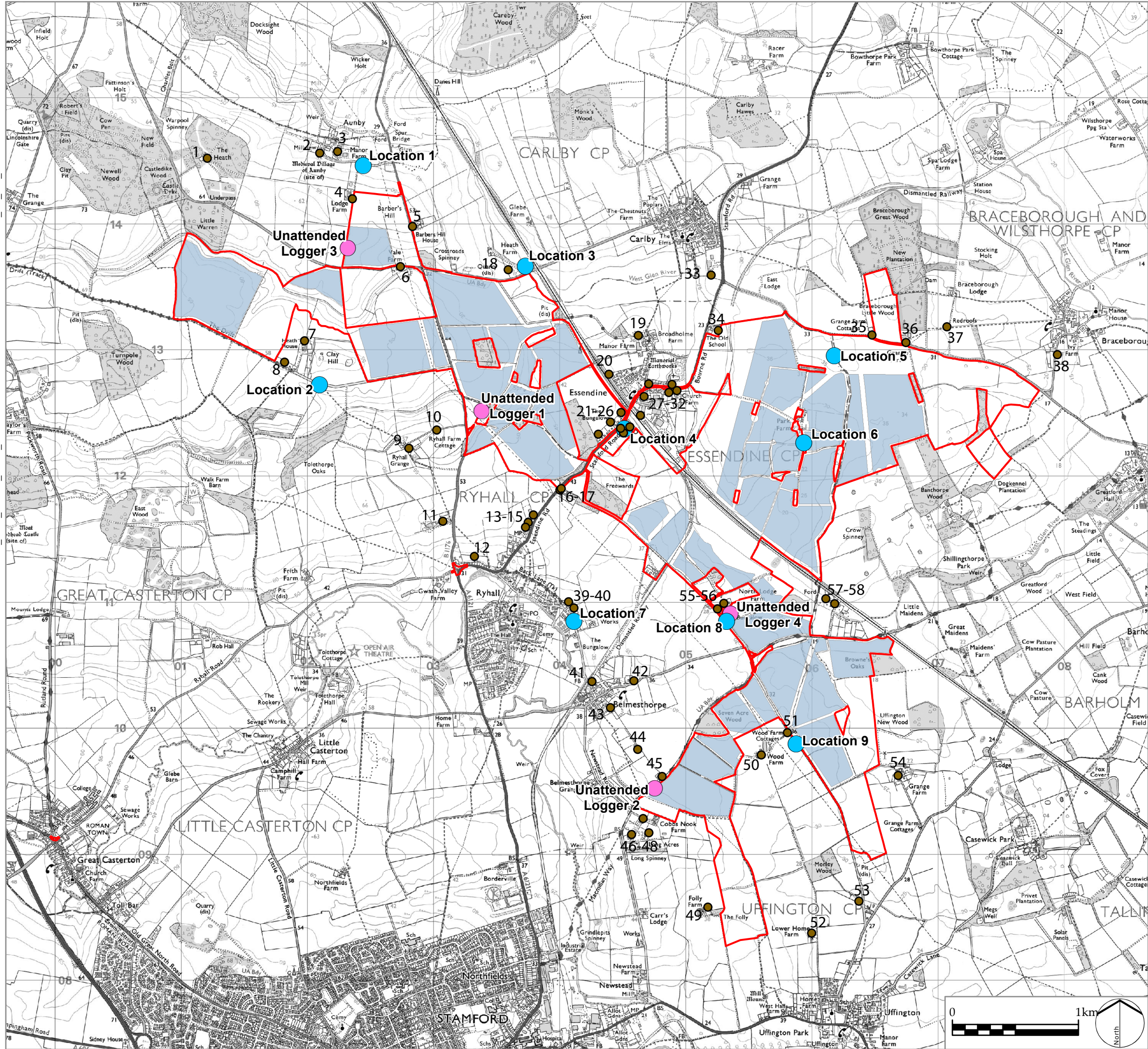


Z:\7863\_NSIP\_SOLAR\_FARM\_CONFIDENTIAL\BGIS\PROJECTS\FIGURES\7863\_SK\_620\_NOISE\_MONITORING\_LOCATIONS.MXD



Infrastructure Planning (Applications:  
Prescribed Forms and Procedure) Regulations 2009  
APFP Regulation: 5(2)(a)

PINS REFERENCE NUMBER  
EN010127

LEGEND

- Order limits
- Solar PV Site
- Attended Noise Monitoring Locations
- Unattended Noise Monitoring Locations
- Nearest Potential Receptor

Ref.	Property	Ref.	Property
1	The Heath	30	Bourne Road 3
2	Mill View	31	Bourne Road 4
3	Manor Farm	32	Church Farm
4	Lodge Farm	33	Crownfield House
5	Barber's Hill House	34	School House
6	Vale Farm	35	Grange Farm Cottage
7	Heath House	36	Braceborough Grange
8	Heath Cottage	37	Redroofs
9	Ryhall Grange	38	Walland House
10	Ryhall Farm Cottage	39	Ryhall 1
11	Top Farm	40	Ryhall 2
12	Turnpike Road	41	Belmesthorpe 1
13	Stebba's Close	42	Belmesthorpe 2
14	Essendine Road 1	43	Belmesthorpe 3
15	Essendine Road 2	44	Ridgeview Farm
16	Sunny Acres 1	45	Green Lane Farm
17	Sunny Acres 2	46	Cobbs Nook Farm
18	Heath Farm	47	Pelham Cottage
19	Manor Farm, Essendine	48	Newstead Hall
20	Plover Road	49	Folly Farm
21	Stamford Road 1	50	Wood Farm
22	Stamford Road 2	51	Wood Farm Cottages
23	Stamford Road 3	52	Lower Home Farm
24	Glen Crescent 1	53	The Stables
25	Glen Crescent 2	54	Grange Farm
26	Glen Crescent 3	55	North Lodge House
27	Station Road	56	North Lodge Farm
28	Bourne Road 1	57	Banthorpe Lodge
29	Bourne Road 2	58	Glen Lodge

P0 DCO Submission  
REV. DESCRIPTION

RP 06/11/22  
APP. DATE



PROJECT TITLE

MALLARD PASS SOLAR FARM

DRAWING TITLE

Figure 10.1: Noise Monitoring Locations

ISSUED BY	Oxford	T: 01865 887050
DATE	Nov 2022	DRAWN AG
SCALE @A3	1:30,000	CHECKED PD
STATUS	Final	APPROVED RP

DWG. NO. 7863\_SK\_620 REV: P0

No dimensions are to be scaled from this drawing.  
All dimensions are to be checked on site.  
Area measurements for indicative purposes only.

© LDA Design Consulting Ltd. Quality Assured to BS EN ISO 9001 : 2015

Sources: Ordnance Survey